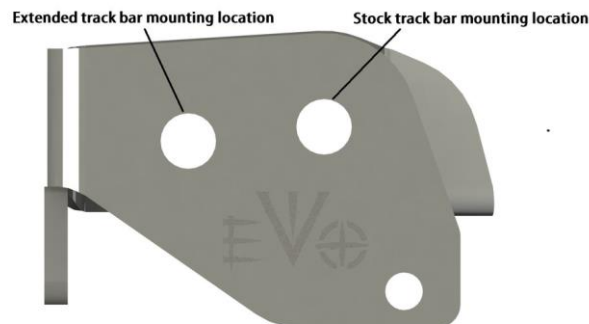




EVO Manufacturing

EVO-3171 JL/JT FRONT STEERING CORRECTION



* This product offers 2 trackbar mounting locations. One can be used to correct steering and center axle after lifting with stock length trackbar, the other can be used with aftermarket adjustable trackbar. This extended location will require a trackbar that can safely reach ~34.25+”. Verify with your trackbar manufacturer.

Before starting installation procedure please read <http://evomfg.com>Returns-Warranties-Shipping>



READ BEFORE INSTALL

Recommended Tools:

- Socket/Tool set
- Wrenches (English/metric)
- Grinder with Flap disk
- Thread lock
- Black Spray Paint
- Drill with bits, Step Drill recommended



Safety Steps for installation

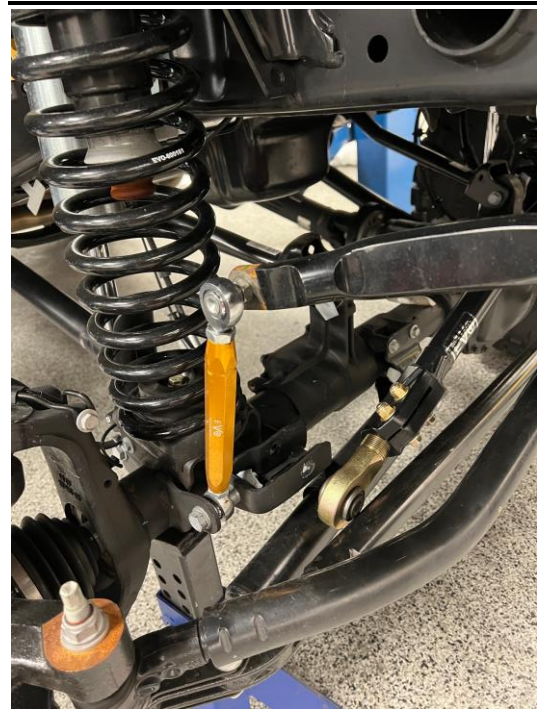
- For installing EVO MFG products always use wheel chokes to block rear tires from rolling.
- Always make sure you have everything necessary ready before install.
- If you have to, carefully lift front of vehicle by front frame rails extending suspension until tires leave the ground, place frame on approved jack stands for vehicle. Verify all lines/wires are not over extended.
- Remove tires if needed for easier install.
- Make sure to wear safety equipment (eye protection, hand protection, foot protection etc.) at all times during installation.
- Make sure all safety precautions have been taken.
- Always check and replace any part of vehicle that is worn or broken before starting install.
- Do not mix anything EVO with weaker alternatives.
- It is generally a good idea to apply liquid threadlock to all bolts.
- Tighten included hardware to torque specifications in bottom table unless it is otherwise specified, factory bolts should be torqued to factory Jeep specifications.



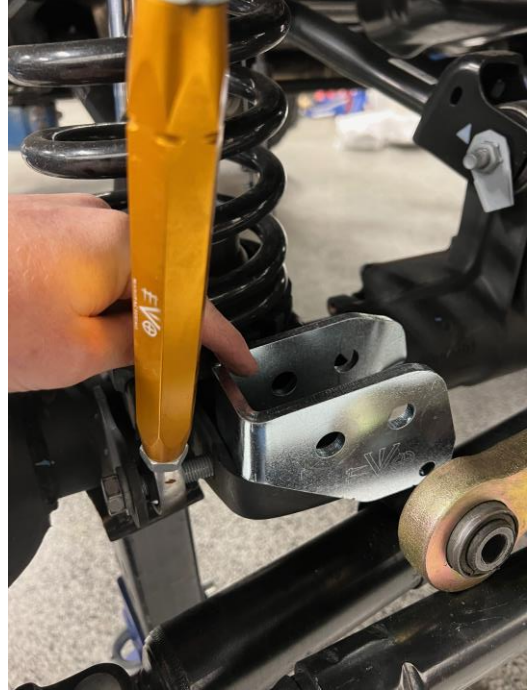
1. Park vehicle safely and securely on level ground.



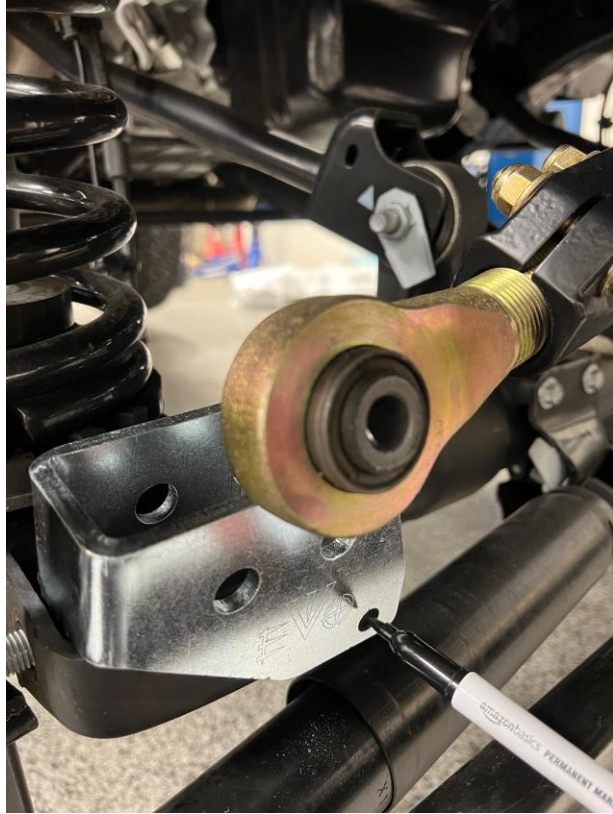
2. Remove bolt holding front trackbar at axle.



3. Remove Passenger side Lower sway bar mounting bolt.
4. Insert EVO Bracket into factory trackbar mount.
5. Loosely Reinstall stock sway bar bolt into original location including through EVO's newly install bracket.



6. Mark forward and top holes to be drilled.



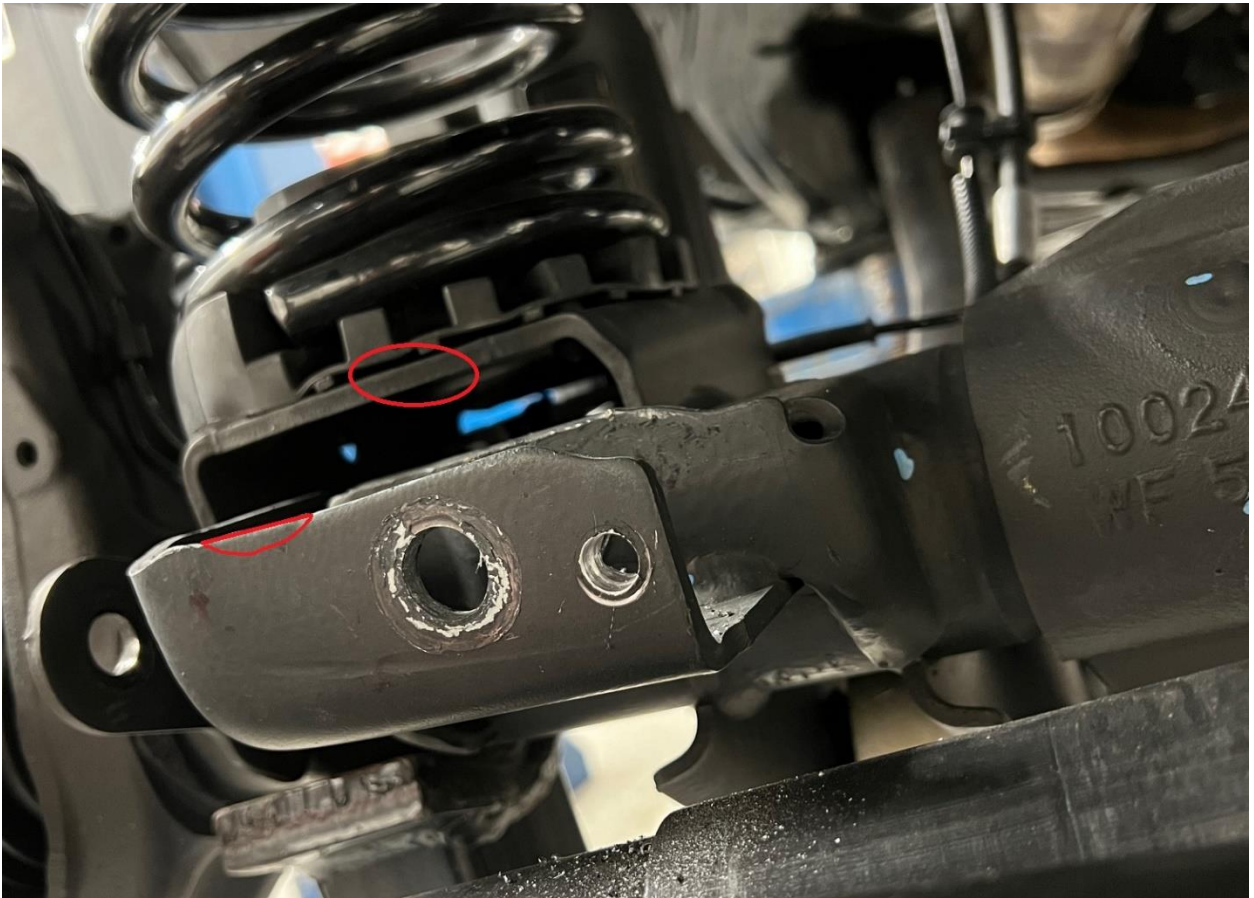


7. Move bolt and EVO Bracket to expose stock trackbar bracket.
Drill both holes. Forward hole M8, Top Hole M6 Bolts.



8. If installing with extended adjustable trackbar, follow this step. If using stock length trackbar location, proceed to new step.

At New Extended Trackbar Location, small clearance will need to be made for trackbar bushing at new location and at bolt nut on coil mount. See red circles in image below. Small clearancing will be needed. Verify with your trackbar, clear as needed.





9. Paint all exposed metal areas, drills and clearances. Reinstall EVO Bracket and install new supplied hardware. Larger M8 bolt in the forward location. Smaller M6 bolt in the upper drilled location.

M6 Torque 15 N/M. M8 Torque 35 N/M



10. If using extended trackbar location. Put stock trackbar nut in vice as shown. Tap with hammer to give bend. This bend should be slight. Enough to give clearance with trackbar head.



11. Reinstall Sway bar link with factory bolt and modified stock nut tab.
12. Install trackbar at new higher location, either stock location or extended with supplied 9/16" Bolt, washers, nut. 9/16" Torque 129 Ft/Lb





After Install:

- After completing installation using provided instructions, go through all steps again to make sure nothing was missed, not tightened or improperly assembled.
- Some components may need to be purchased separately.
- Make sure all gauges are fully operational.
- Drive the vehicle slowly for a couple minutes, looking and listening for abnormal noises while driving. After modification of a vehicle there will be differences in driving experiences and capabilities, be mindful of that.
- Inspect and Retorque all Bolts after 500 miles of completed installation and regularly thereafter.

General Recommended Torque Specs:

Size	Grade 2		Grade 5		Grade 8		18-8 S/S	
	Coarse	Fine	Coarse	Fine	Coarse	Fine	Coarse	Fine
#4*	-	-	-	-	-	-	5.2	-
#6*	-	-	-	-	-	-	9.6	-
#8*	-	-	-	-	-	-	19.8	-
#10*	-	-	-	-	-	-	22.8	31.7
1/4	4	4.7	6.3	7.3	9	10	6.3	7.8
5/16	8	9	13	14	18	20	11	11.8
3/8	15	17	23	26	33	37	20	22
7/16	24	27	37	41	52	58	31	33
1/2	37	41	57	64	80	90	43	45
9/16	53	59	82	91	115	129	57	63
5/8	73	83	112	128	159	180	93	104
3/4	125	138	200	223	282	315	128	124
7/8	129	144	322	355	454	501	194	193