



EVO Manufacturing

Jeep Wrangler JL

Rear Inner Fender Liner

EVO-3159

Before starting installation procedure please read <http://evomfg.com>Returns-Warranties-Shipping>

CAREFULLY READ AND FOLLOW ALL INSTRUCTIONS IN THIS MANUAL AND KEEP FOR FUTURE REFERENCE. IF YOU HAVE ANY QUESTIONS ABOUT THE PRODUCT CALL EVO MANUFACTURING. FAILURE TO FOLLOW GUIDELINES COULD RESULT IN MALFUNCTION OF PARTS OR INJURY. PLEASE HAVE A TRAINED PROFESSIONAL ASSIST WITH OR INSTALL ALL PRODUCTS. INSTALLING EVO MFG PRODUCTS OR KITS DEMANDS SPECIFIC KNOWLEDGE, TOOLS AND EXPERIENCE. GENERAL KNOWLEDGE OF HOW TO USE LATER SPECIFIED TOOLS AND/OR LIMITED EXPERIENCE WITH EVO MFG PRODUCTS MAY NOT BE ENOUGH TO PROPERLY COMPLETE THESE TASKS. SOME OF EVO MFG PRODUCTS MAY REQUIRE TWO OR MORE PEOPLE TO INSTALL SAFELY AND CORRECTLY. DO NOT ATTEMPT ALONE, ALWAYS ENLIST THE HELP OF TRAINED PROFESSIONAL WHEN NEEDED.



Notes: Set Up Before installation

These instructions involve how to install Inner Liners with factory fenders.

This installation process will vary with aftermarket fenders.

If installing with aftermarket fenders work around these steps to install.

Inner fenders must mount to all body connections directly and then install all other fender parts or supports to the inner fender section. Sandwiching inner fenders between.

Do not mount inner fenders to outside of other parts.

Some adjustments may be needed to secure liner properly per individual vehicle setup.

Keep all mounting bolts loose (installed but not torqued) we will torque later at the end of complete installation

READ BEFORE INSTALL:

It is generally a good idea to apply Loctite to all threaded bolts.

ALWAYS wear safety glasses and other approved safety gear when working on a vehicle.

All supplied bolts torqued according to chart at end of instruction.

It is recommended all installation be performed by a trained professional. Some modification may have to be done.

Paint all unfinished surfaces after install is complete if preferred.

Recommended Tools:

- Allen set
- Wrench with standard sockets
- Drill and with bits
- Plastic fastener clip removal tool



Safety Steps for installation

- For installing EVO MFG products always use wheel chokes to block rear tires from rolling.
 - Always make sure you have everything necessary ready before install.
 - If you have to, carefully lift front of vehicle by front frame rails extending suspension until tires leave the ground, place frame on approved jack stands for vehicle. Verify all lines/wires are not over extended.
 - Remove tires if needed for easier install.
 - Make sure to wear safety equipment (eye protection, hand protection, foot protection etc.) at all times during installation.
 - Make sure all safety precautions have been taken.
 - Always check and replace any part of vehicle that is worn or broken before starting install.
 - Do not mix anything EVO with weaker alternatives.
 - It is generally a good idea to apply liquid thread lock to all bolts.
 - Tighten included hardware to torque specifications in bottom table unless it is otherwise specified, factory bolts should be torqued to factory Jeep specifications.
-





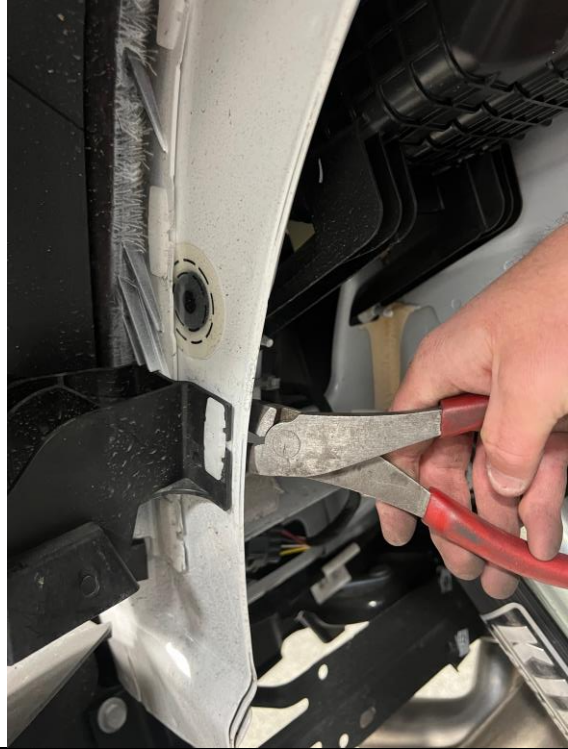
INSTALL: LEFT AND RIGHT SIDE PRODUCES ARE SAME

***Pictures are for reference only, product may vary. ***

Remove stock liner.
This can be done by either drilling out the rivets or by pushing on liner at each rivet location. Remove/pull clips from liner on the inner surface at body.



Remove the fender clips.
Clips on the top of the fender and 1 on
the rear.
These are multi piece clips, all of the clips
need to be removed. 3 on each side of
vehicle.





Additionally, clip/remove the 1 clip as shown.

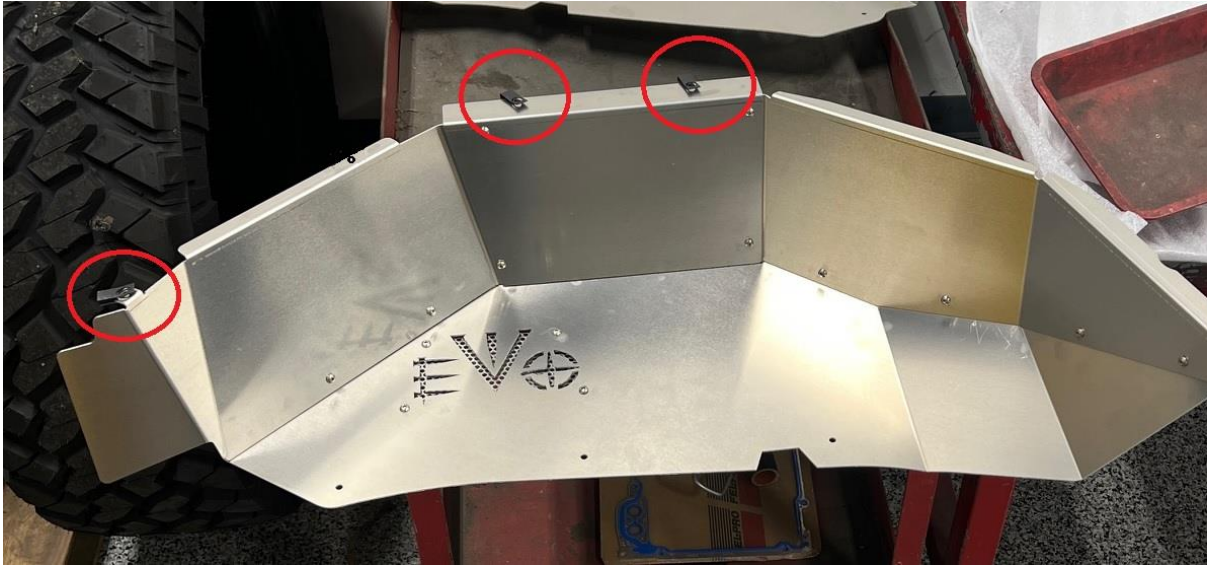




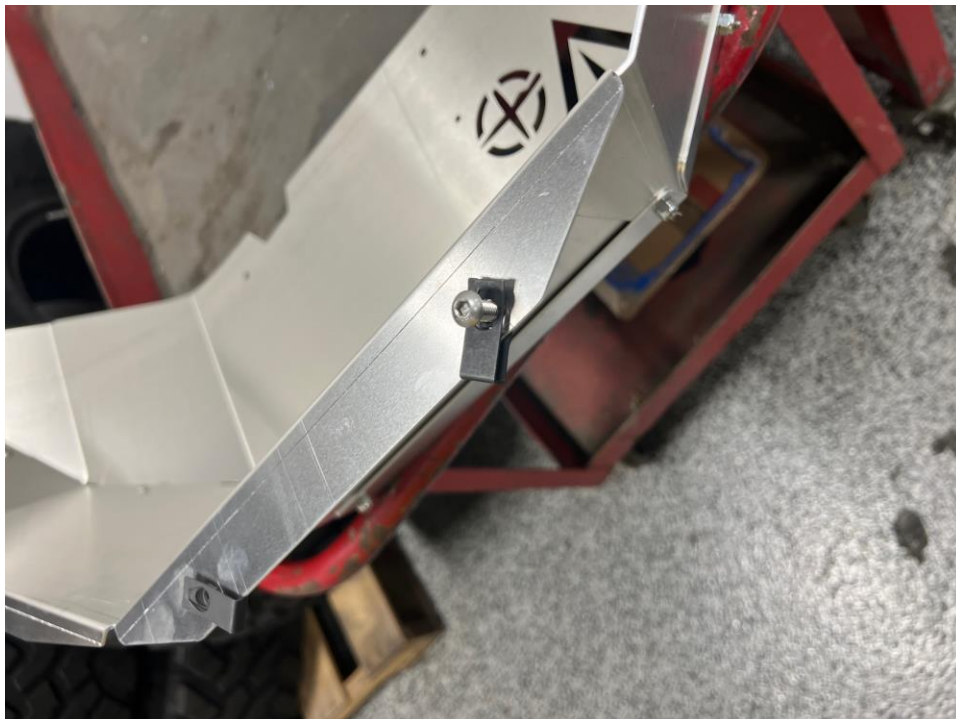
Assemble Liners as shown with supplied #10 screws and nuts.

*Left and right panels first onto main large panel. Then middle panel on top.

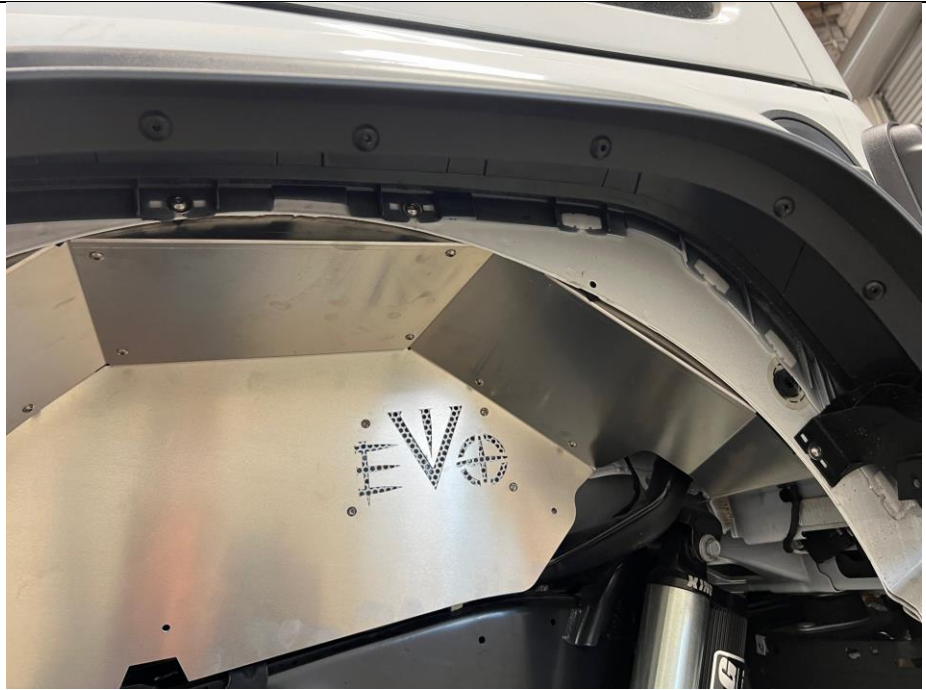
Install Supplied Clip nuts to the 3 circled locations. Barrel end of clip nut should be on back side towards the vehicles body.



Before installing to vehicle, rotate clips as shown and use supplied 1/4" screw to center clips in holes making sure bolt will thread.



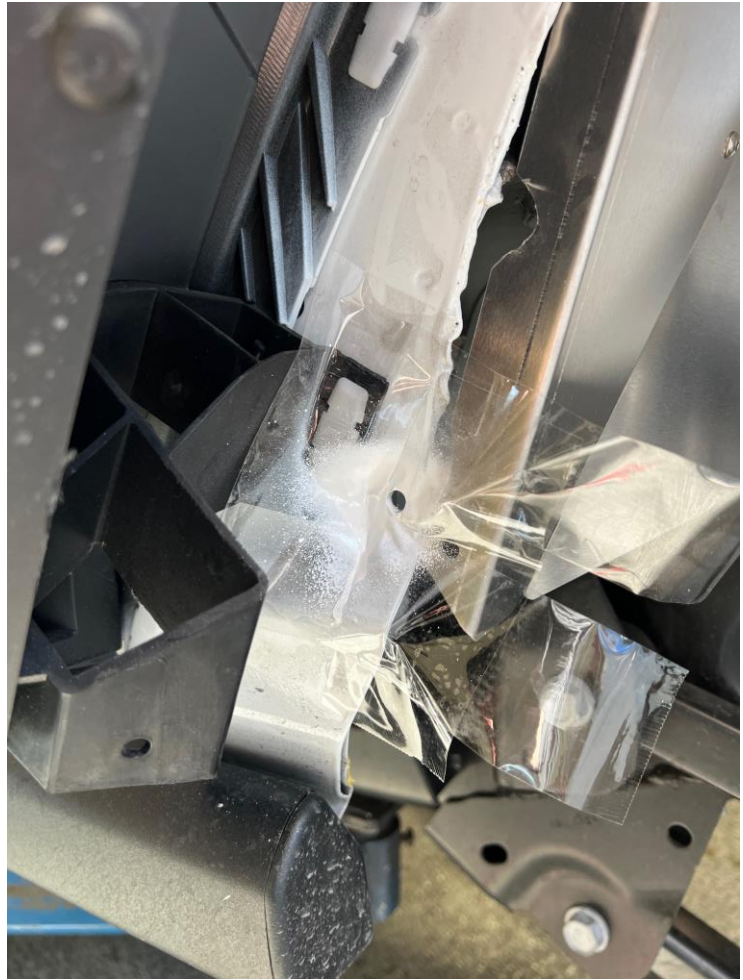
Install Liner to vehicle as shown. Thread in the 3 supplied 1/4" screws with washer to the 3 clip nut locations.



Center Mark forward mounting how and drill with 9/32 drill.



Mask and Paint drilled hole.
Wait appropriate time to dry



Install supplied ¼" screw with washer and nut on the forward drilled hole.





Repeat all steps on opposite side.

After Install:

- Tighten all bolts securing purchased parts to specified locations.
- After completing installation using provided instructions, go through all steps again to make sure nothing was missed, not tightened or improperly assembled.
- Some components may need to be purchased separately.
- Check turn signals, headlights, fog lights (if applicable), taillights, blinkers and windshield wipers.
- Adjust mirrors, speedometer and headlights if needed.
- Make sure all gauges are fully operational.
- Drive the vehicle slowly for a couple minutes, looking and listening for abnormal noises while driving. After modification of a vehicle there will be differences in driving experiences and capabilities, be mindful of that.
- Inspect and Retorque all Bolts after 500 miles of completed installation and regularly thereafter.
- Some modification may be required.

Recommended Torque: Ft/Lb *In/Lb

Size	Grade 2		Grade 5		Grade 8		18-8 S/S	
	Coarse	Fine	Coarse	Fine	Coarse	Fine	Coarse	Fine
#4*	-	-	-	-	-	-	5.2 In	-
#6*	-	-	-	-	-	-	9.6 In	-
#8*	-	-	-	-	-	-	19.8 In	-
#10*	-	-	-	-	-	-	22.8 In	31.7
1/4	4	4.7	6.3	7.3	9	10	6.3	7.8
5/16	8	9	13	14	18	20	11	11.8
3/8	15	17	23	26	33	37	20	22
7/16	24	27	37	41	52	58	31	33
1/2	37	41	57	64	80	90	43	45
9/16	53	59	82	91	115	129	57	63
5/8	73	83	112	128	159	180	93	104
3/4	125	138	200	223	282	315	128	124
7/8	129	144	322	355	454	501	194	193
1†	188	210	483	541	682	764	287	289