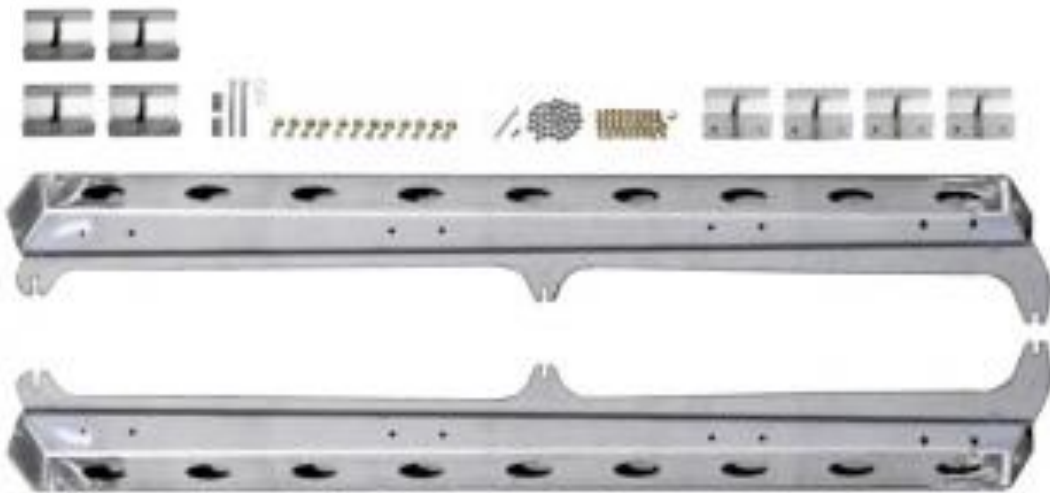




EVO Manufacturing
Jeep Wrangler JT Gladiator
JT Bomber Rockers
EVO- 3070





Before starting installation procedure please read <http://evomfg.com>Returns-Warranties-Shipping>

CAREFULLY READ AND FOLLOW ALL INSTRUCTIONS IN THIS MANUAL AND KEEP FOR FUTURE REFERENCE. IF YOU HAVE ANY QUESTIONS ABOUT THE PRODUCT CALL EVO MANUFACTURING. FAILURE TO FOLLOW GUIDELINES COULD RESULT IN MALFUNCTION OF PARTS OR INJURY. PLEASE HAVE A TRAINED PROFESSIONAL ASSIST WITH OR INSTALL ALL PRODUCTS. INSTALLING EVO MFG PRODUCTS OR KITS DEMANDS SPECIFIC KNOWLEDGE, TOOLS AND EXPERIENCE. GENERAL KNOWLEDGE OF HOW TO USE LATER SPECIFIED TOOLS AND/OR LIMITED EXPERIENCE WITH EVO MFG PRODUCTS MAY NOT BE ENOUGH TO PROPERLY COMPLETE THESE TASKS. SOME OF EVO MFG PRODUCTS MAY REQUIRE TWO OR MORE PEOPLE TO INSTALL SAFELY AND CORRECTLY. DO NOT ATTEMPT ALONE, ALWAYS ENLIST THE HELP OF TRAINED PROFESSIONAL WHEN NEEDED.

Notes: Set Up Before installation

This product requires permanent drilling of holes into the body of the Jeep and installing threaded inserts. Once process has started there is no going back.

Rivnuts/Nutserts are used in this installation. Installation tool for this is required and not included. Thread Size ¼-20

Always wear approved safety equipment while performing the installation.

It is recommended that EVO MFG Bombers/Skins are installed uncoated/painted first, then coat/paint and perform final assembly.

Keep all mounting bolts loose (installed but not torqued) we will torque later at the end of complete installation

READ BEFORE INSTALL:

It is generally a good idea to apply Loctite to all threaded bolts.

ALWAYS wear safety glasses and other approved safety gear when working on a vehicle.

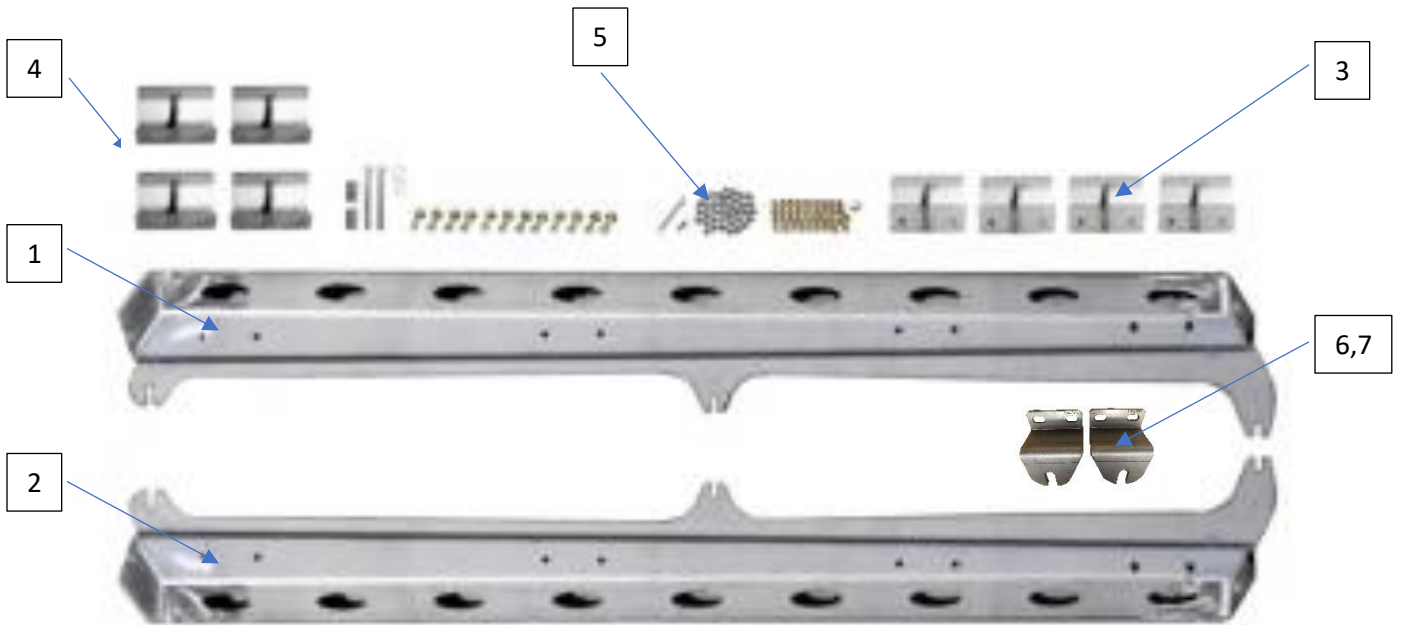
All supplied bolts torqued according to chart at end of instruction.

It is recommended all installation be performed by a trained professional. Some modification may have to be done.



Parts included: Table below shows Jeep Gladiator Bomber Rockers.

Description	#	Part #	Quantity
Bomber Rockers Driver	1	EVO-12400	1
Bomber Rockers Passenger	2	EVO-12401	1
Front/Mid Pinch Seam Mount	3	EVO-12353	4
Mid/Rear Pinch Seam Mount	4	EVO-12354	4
Rocker Step Hardware	5	EVO-770083	1
Rear Body Mount Plate Driver	6	EVO-12421	1
Rear Body Mount Plate Passenger	7	EVO12422	1
Forward Bodymount Crush Tube	8	EVO-12355	2





Recommended Tools:

- Allen set
 - Impact with standard sockets
 - Nutsert install tool
 - Drill and bit
-



Safety Steps for installation

- For installing EVO MFG products always use wheel chokes to block rear tires from rolling.
 - Always make sure you have everything necessary ready before install.
 - If you have to, carefully lift front of vehicle by front frame rails extending suspension until tires leave the ground, place frame on approved jack stands for vehicle. Verify all lines/wires are not over extended.
 - Remove tires if needed for easier install.
 - Make sure to wear safety equipment (eye protection, hand protection, foot protection etc.) at all times during installation.
 - Make sure all safety precautions have been taken.
 - Always check and replace any part of vehicle that is worn or broken before starting install.
 - Do not mix anything EVO with weaker alternatives.
 - It is generally a good idea to apply liquid threadlock to all bolts.
 - Tighten included hardware to torque specifications in bottom table unless it is otherwise specified, factory bolts should be torqued to factory Jeep specifications.
-





MANUFACTURING

Park vehicle on flat ground,
parking brake engaged and
chalk wheels.

1. Uninstall front body
mount bolt. Loosen (do
not remove) middle and
rearward body mount
bolts.
-



2. Loosely preassemble inner seam mounts to main bomber rails. The inner seam mounts with the 4-center hole pattern will be used at both front and front/middle locations. The inner seam mount with the 2-center hole pattern will be used at the rear and rear/middle locations.
-



3. Using the supplied 3/8" hardware, loosely install all 8 bolts from bottom up at all 4 inner seam mount locations (2 each mount). It is best to tighten these to the point just before getting tight (loose but almost tight). This will save time later during final install while tightening all bolts on the vehicle.

On top side of bomber, install all 4 seam mount button head bolts completely.



4. Install rear body mount plate to bomber using 3/8" hardware.

Mount the plate with slotted end facing upwards. Attach the plate on the top side of rear mounting holes of bomber. Use 2 of the supplied 3/8" bolt and nut.



5. Install all button head bolts into bomber bolt hole locations (see picture for reference).
-

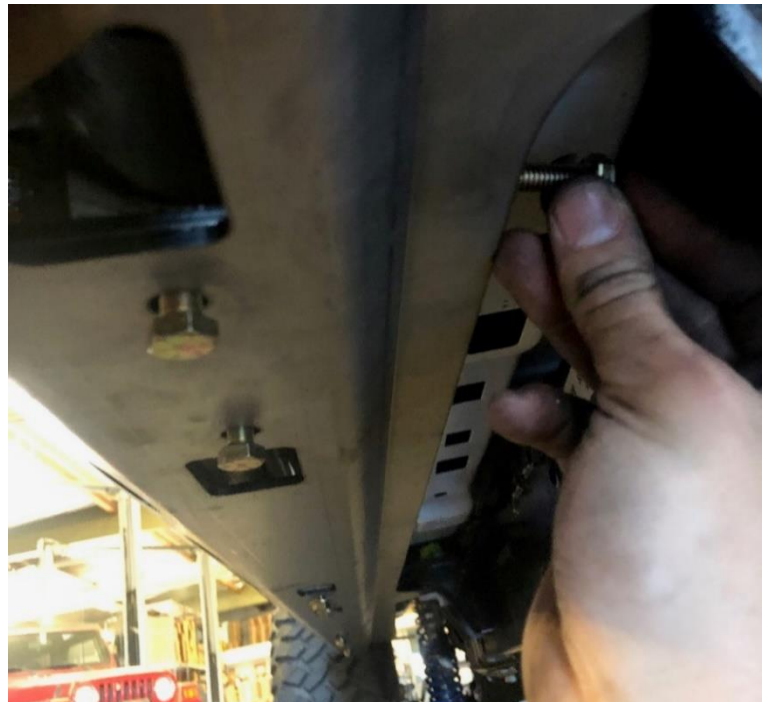


6. With the help of 2 people, lift Bomber into location and insert front and rear bolts into existing pinch seam holes at body. Loosely install washer and nut. This will loosely hold part in place.
 7. Insert spacer tube in gap between Bomber and front body mount. Loosely (just before tightening) install the supplied M12 bolt with washer at this front body mount location.
 8. Reinstall the middle and rear body mount bolts, just before tight.
-



9. Using the factory holes in body pinch seam install supplied 5/16" bolts and washers through body and into inner seam mounts.
-

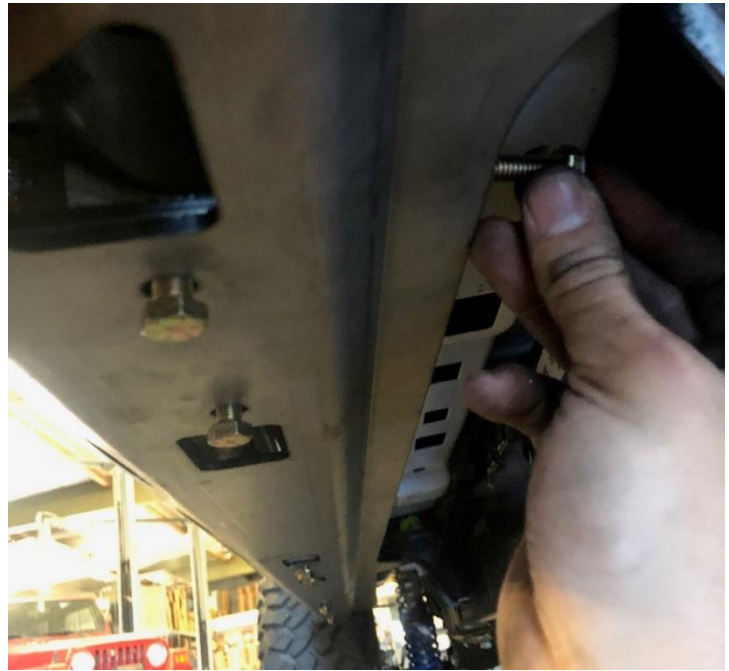
On 5/16" bolts, install bolts with washer on head side only. The inside nut is a flange nut, no washers are used on flange nut.



When all bolts in parts are installed, apply an inward pressure on bomber, tighten body mount bolts.



Then tighten all pinch seam bolts.





After Install:

- Tighten all bolts securing purchased parts to specified locations.
- After completing installation using provided instructions, go through all steps again to make sure nothing was missed, not tightened or improperly assembled.
- Some components may need to be purchased separately.
- Check turn signals, headlights, fog lights (if applicable), taillights, blinkers and windshield wipers.
- Adjust mirrors, speedometer and headlights if needed.
- Make sure all gauges are fully operational.
- Drive the vehicle slowly for a couple minutes, looking and listening for abnormal noises while driving. After modification of a vehicle there will be differences in driving experiences and capabilities, be mindful of that.
- Inspect and Retorque all Bolts after 500 miles of completed installation and regularly thereafter.
- Some modification may be required.

Recommended Torque:

Size	Grade 2		Grade 5		Grade 8		18-8 S/S	
	Coarse	Fine	Coarse	Fine	Coarse	Fine	Coarse	Fine
#4*	-	-	-	-	-	-	5.2	-
#6*	-	-	-	-	-	-	9.6	-
#8*	-	-	-	-	-	-	19.8	-
#10*	-	-	-	-	-	-	22.8	31.7
1/4	4	4.7	6.3	7.3	9	10	6.3	7.8
5/16	8	9	13	14	18	20	11	11.8
3/8	15	17	23	26	33	37	20	22
7/16	24	27	37	41	52	58	31	33
1/2	37	41	57	64	80	90	43	45
9/16	53	59	82	91	115	129	57	63
5/8	73	83	112	128	159	180	93	104
3/4	125	138	200	223	282	315	128	124
7/8	129	144	322	355	454	501	194	193
1†	188	210	483	541	682	764	287	289