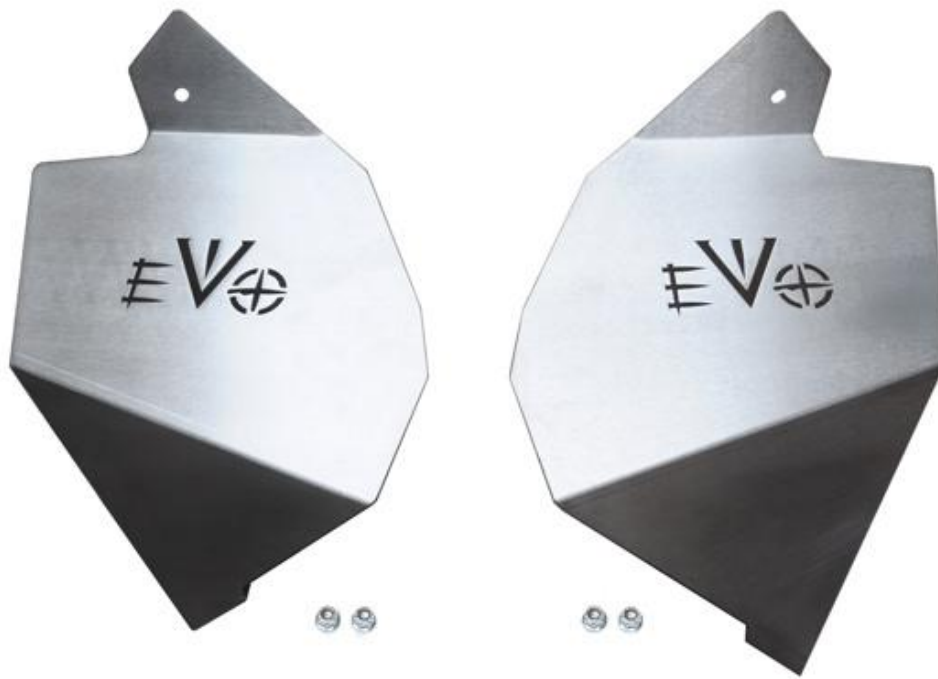




EVO-214AL



Bill of Materials

Part number	Description	Quantity
EVO-12139	Mini EVO Liner Passenger	1
EVO-12140	Mini EVO Liner Driver	1
EVO-900386	M-6 Lock Nut	4

Note: Mini EVO Liners are made and shipped in raw aluminum. They can oxidize, scratch, stain, etc. Upkeep/cleaning will be required in raw finish. It is recommended to treat in some way (paint, powder coat, etc.)

Note: This product requires removal of the front inner fenders. If your inner fenders are already removed, skip to step 4.

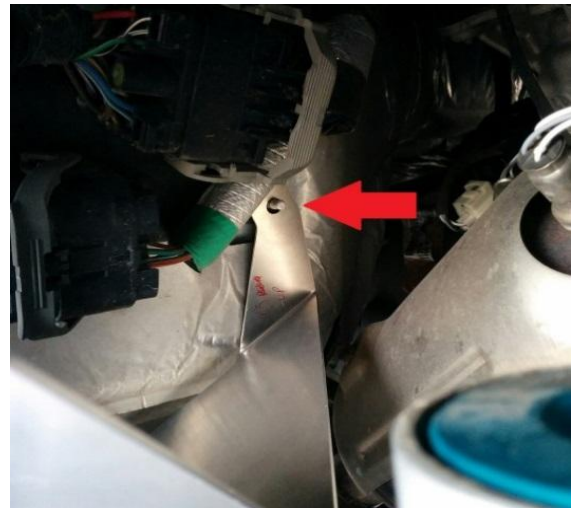
1. To remove your front factory inner fenders, begin by drilling out the 3 plastic rivets at the rear of the fender using a 3/16" drill bit.
2. Using a 10mm wrench remove the nut holding the inner fender in place.



3. Remove the panel clips using a panel clip tool or similar tool. There are a total of 4 clips. You should now be able to work your inner fender out of the wheel well.



4. On the Passenger side, fit the Mini EVO Liner's rear bolt tab to the bolt stud holding the electrical connectors in place, shown below. Thread the supplied nut on, do not tighten it at this time.



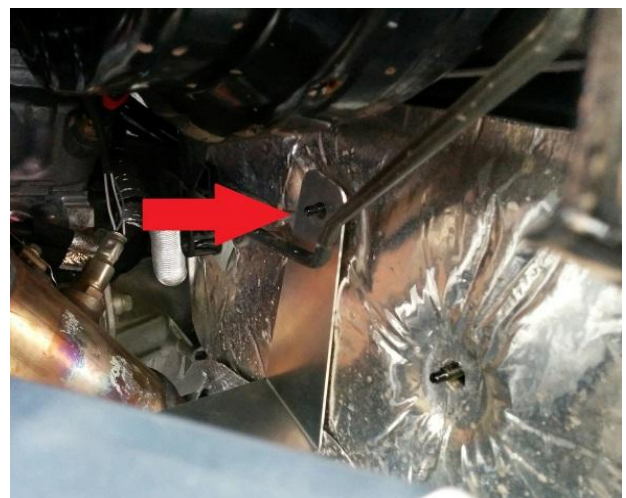
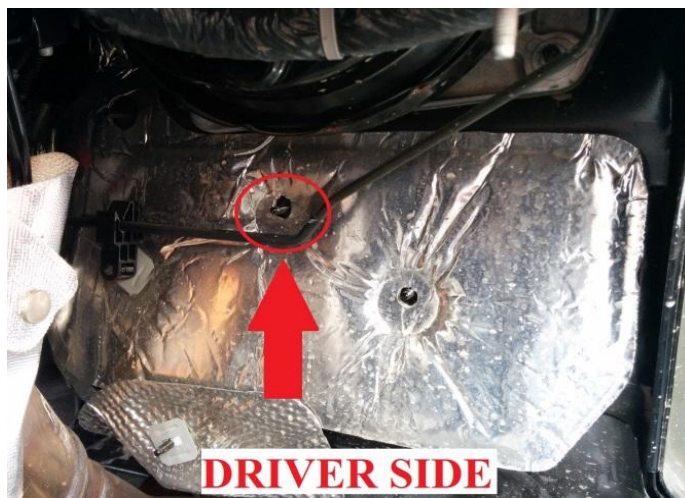
5. With the rear bolt tab in place, fit the Mini EVO Liner's front bolt tab to the bolt in the upper part of the wheel well, shown below.



6. Thread one of the supplied nuts to the bolt. To tighten, you will need to access the top of the bolt. This is under the hood, between the battery and the side wall, pictured below. You will need a 10mm wrench, a 10mm socket and a ratchet with an extension.
7. With the upper tab secured, now tighten the nut threaded onto the rear tab from step 4 using a 10mm socket and a ratchet with an extension.



8. On the Driver side, fit the Mini EVO Liner's rear bolt tab to the bolt stud and thread on a nut as before, however, you will need to be sure the bolt tab fits underneath the brake line, as shown below.



9. Fit the Mini EVO Liner's front bolt tab onto the bolt on the upper part of the wheel well (same as step 5). Again, making sure the rear tab stays in place.
10. To access the top of this nut under the hood, some JK's will require removing the horn. Remove the 10mm nut shown below and move the horn to access the bolt head below.
11. Using a 10mm wrench, 10mm socket and a ratchet with an extension, tighten the top bolt (Same as in step 6). Remember to replace your horn when you're finished.



12. With the upper tab secured, tighten the nut on the rear tab from step 8 using a 10mm socket and extension (Same as step 7).



Alternate Firewall Configurations

- The bolt stud on the passenger side may require removal of the large plastic nut.
- On the driver side, a heat shield may need to be trimmed or bent slightly to access the bolt stud.



Installation with EVO-1108, EVO-201-1, or EVO-202 Equipped JK's

- The hose to the passenger front shock reservoir will need to be isolated. This can be done by cutting some of the plastic above the hose allowing it to move up out of the way, like it does on the driver side. Or the hose can also be isolated using a piece of hose or tubing from a hardware store cut to size, slit and zip tied to the shock hose where it makes contact, as shown.

