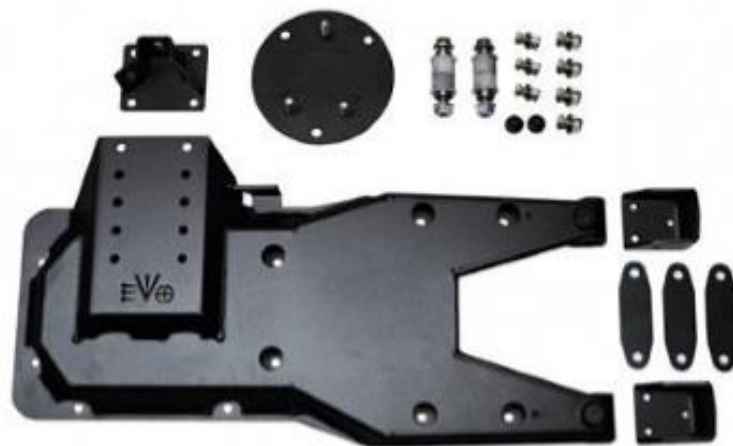




EVO Manufacturing
Jeep Wrangler JK/JKU
JK/JKU Tailgate Tire Carrier
EVO- 1162





Before starting installation procedure please read <http://evomfg.com>Returns-Warranties-Shipping>

CAREFULLY READ AND FOLLOW ALL INSTRUCTIONS IN THIS MANUAL AND KEEP FOR FUTURE REFERENCE. IF YOU HAVE ANY QUESTIONS ABOUT THE PRODUCT CALL EVO MANUFACTURING. FAILURE TO FOLLOW GUIDELINES COULD RESULT IN MALFUNCTION OF PARTS OR INJURY. PLEASE HAVE A TRAINED PROFESSIONAL ASSIST WITH OR INSTALL ALL PRODUCTS. INSTALLING EVO MFG PRODUCTS OR KITS DEMANDS SPECIFIC KNOWLEDGE, TOOLS AND EXPERIENCE. GENERAL KNOWLEDGE OF HOW TO USE LATER SPECIFIED TOOLS AND/OR LIMITED EXPERIENCE WITH EVO MFG PRODUCTS MAY NOT BE ENOUGH TO PROPERLY COMPLETE THESE TASKS. SOME OF EVO MFG PRODUCTS MAY REQUIRE TWO OR MORE PEOPLE TO INSTALL SAFELY AND CORRECTLY. DO NOT ATTEMPT ALONE, ALWAYS ENLIST THE HELP OF TRAINED PROFESSIONAL WHEN NEEDED.

Notes: Set Up Before installation

***Powder coated tire carriers are coated exterior only, additional coating/paint should be checked and sprayed by installer before install.**

Carefully remove factory spare tire, use proper precaution

Unless otherwise specified, keep all mounting bolts loose (installed but not torqued) we will torque later at the end of complete installation

READ BEFORE INSTALL:

*Some backspacing wheels/tire width combinations (small backspacing/wide tires) may require a single wheel spacer to properly mount to tire carrier. While this tire carrier will mount/clear a larger tire, we currently are recommending max 37".

*You will need a Torx bit set ranging from T6– T55 to complete installation.

*It is recommended to NOT open tailgate until installation is complete. Some preload adjustments may need to be made after complete installation. Do so as needed.

*It is generally a good idea to apply Loctite to all threaded bolts.

*ALWAYS wear safety glasses and other approved safety gear when working on a vehicle.

*All supplied bolts torqued according to chart at end of instruction.

*It is recommended all installation be performed by a trained professional. Some modification may have to be done.

*Paint all unfinished surfaces after install is complete.



Parts included: Table below shows EVO Tailgate Tire Carrier.

Description	#	Part #	Quantity
EVO Tailgate Tire Carrier	1	EVO-12161	1
Bolt Plate	2	EVO-12162	1
Wheel Mount	3	EVO-12163	1
Hinge Bracket	4	EVO-12165	2
Tire Carrier Spacer	5	EVO-12166	3
Tire Carrier Hinge Tubes	6	EVO-12167	2
Lower Door Catch Bracket	7	EVO-12177	1
Upper Door Catch Bracket	8	EVO-12178	1
Tire Carrier Hardware Pack	9	EVO-770058	1





Recommended Tools:

- An Extra Long T50 Torx bit is recommended to make this install more efficient
 - Wrench and Sockets
 - Allen Set
-



Safety Steps for installation

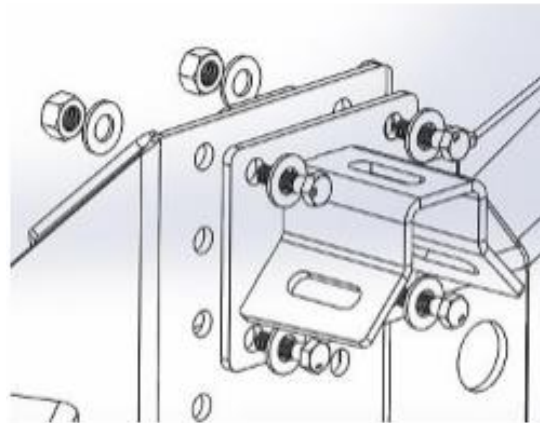
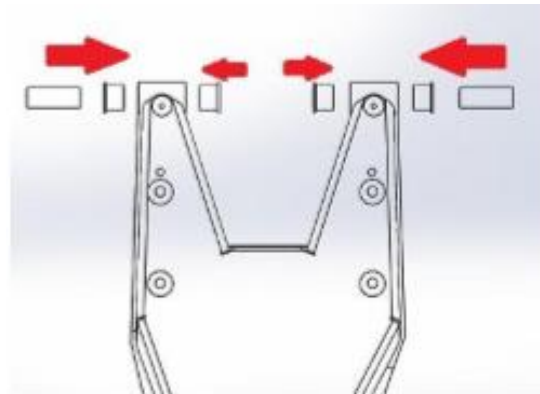
- For installing EVO MFG products always use wheel chokes to block rear tires from rolling.
 - Always make sure you have everything necessary ready before install.
 - If you have to, carefully lift front of vehicle by front frame rails extending suspension until tires leave the ground, place frame on approved jack stands for vehicle. Verify all lines/wires are not over extended.
 - Remove tires if needed for easier install.
 - Make sure to wear safety equipment (eye protection, hand protection, foot protection etc.) at all times during installation.
 - Make sure all safety precautions have been taken.
 - Always check and replace any part of vehicle that is worn or broken before starting install.
 - Do not mix anything EVO with weaker alternatives.
 - It is generally a good idea to apply liquid threadlock to all bolts.
 - Tighten included hardware to torque specifications in bottom table unless it is otherwise specified, factory bolts should be torqued to factory Jeep specifications.
-





INSTALL

1. Check that the barrels are clean and free of coating. Light sanding may be required. Install the 4 hinge bushings and 2 inner sleeves into both hinge barrels. Use a light oil (WD-40) inside the barrel, these should have a snug fit. A light tap with a rubber mallet may be required to seat the bushings, but do not force them. Hand install at first and only tap to seat them. These will not require further oil, just during install.
2. Using 4 supplied 7/16 bolts, 4 lock nuts, and 8 washers (11/16 wrench and socket), secure the bolt plate to the tire carrier. There are location options, all the way up is recommended for clearance, but lower locations will increase rear window visibility. You will need to access the inside of the Tailgate Tire Carrier to reach the nuts so be sure to do this before bolting it to the tailgate.



- Using a 3/32 Allen wrench and 11/32 wrench (or adjustable) install the rubber bumper onto the hinge as shown. On the top hinge, install the bumper in the bottom hole. On the bottom hinge install the bumper in the top hole.
-



- Using a T30 Torx bit, remove the 2 screws holding the door catch to the inside of the tailgate, as shown. With the bolts removed, pull the door catch out from the body of the vehicle.
-



5. Remove the 8 bolts around the vent in the center of the tailgate as well as the plastic trim covering the hinges. Set the bolts aside to reuse later.
-



6. With the tailgate closed and your vehicle on level ground, remove the factory hinges by removing the 4 bolts on the tailgate (13 mm wrench) and the 6 bolts on the body (Torx T50). Set bolts aside to reuse later.
-



Note: Do not open your tailgate after step 6!

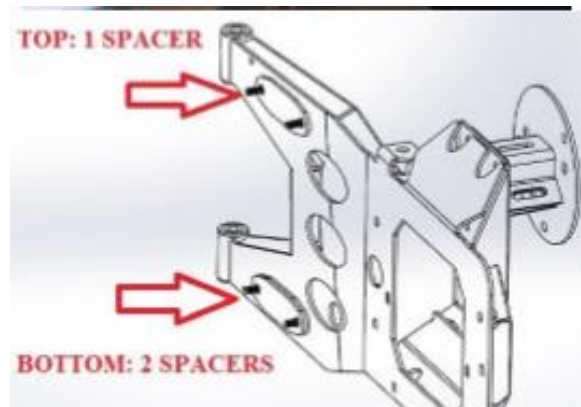
7. Using the 6 T50 Torx bolts removed in step 6, loosely bolt the Tailgate Tire Carrier hinges to the body. Don't tighten the hinges at this time.
-



8. Install the Tailgate Tire Carrier into the hinges and slide the supplied 4" long 9/16 bolts, washers and lock nuts through to secure it to hinges. Do not tighten at this time.
-



9. Using the 4 bolts that mounted the factory hinges to the tailgate in step 5, slide them into the 4 holes from the outside as shown. On the top, hang 1 of the supplied oval spacers and on the bottom, hang 2 spacers from the inserted bolts as shown.
-



10. Slowly swing the Tailgate Tire Carrier closed being sure the bolts and spacers stay in place. As the Tire carrier comes flush with the tailgate, make sure the 4 bolts line up with the 4 holes in the tailgate. Use a 13mm socket with extension to thread the right side bolts first, then the left. Do not tighten them at this time.
-



11. Using 6 of the 8 bolts that were surrounding the vent in the center of the tailgate (removed in step 5), thread them into the remaining 6 openings in the Tailgate Tire Carrier. These can be accessed using a 13mm socket and extension as shown.

12. Once all the bolts are threaded to the tailgate, fully tighten all bolts to tailgate only.



Note: If you don't have an extra-long T50 bit, this install can still be done, but it may require 2 people. After completing step 12, start by opening the tailgate and applying upward pressure on the tire carrier and tailgate. Tighten the bolts on the inside of the hinges (Pictured in step 14). You then need to check and verify that the tailgate closes and latches properly. If it does not, loosen the bolts, adjust and retighten. It may take several tries.

13. With the tailgate closed use the Extra Long T-50 bit, tighten the 2 bolts on the passenger side of each hinge (1 bolt per hinge). Note: If you do not have an extra-long T50 bit. With the tailgate closed, you will need to remove the 9/16 bolts from the hinges. Leaving the tailgate latched, carefully swing the tailgate out from the hinges to access and tighten the remaining 2 T50 bolts.



14. Open the tailgate and tighten the 4 bolts on the inside of each hinge (2 bolts per hinge) Note: If you're following the instructions for install without the extra-long T50 bit, you already tightened these bolts after step 12

15. Tighten the 9/16" bolts through the hinges.

Note: Because the hinges are designed to have a high quality, precision fit, they may feel slightly resistive at first.

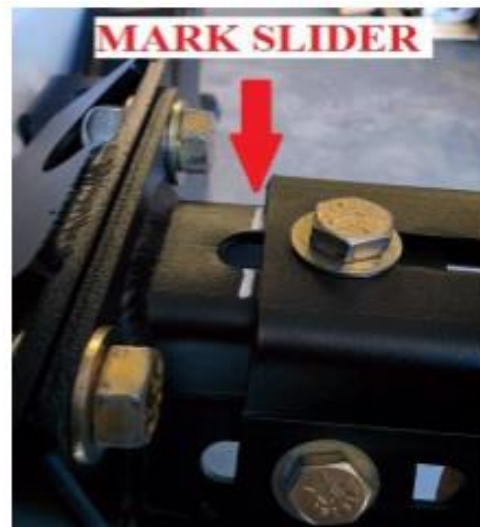


NOTE: Steps 16-19 must be followed closely to prevent rattle/tire vibration.

16. Loosely bolt the Wheel Mount to the Bolt Plate using 3 supplied 7/16 bolts, locknuts and washers. Make sure this part can still slide



17. Install your wheel and tire and fully tighten the lug nuts to the wheel mount. With the tire secured, slide it toward the tailgate until the tire contacts the tire carrier. On the slider, mark on the bolt plate where it stops (this is easier to mark with the tailgate open). Note: If your wheel/tire combo is beyond the reach of the support mount, you will need to use a wheel spacer.
-



18. Once slider is marked, remove the wheel and tire.
19. Move the slider back (toward the tailgate) to cover the mark you made in step 17 (you should move it back around 3/16 in over your mark). Fully tighten the 3 bolts on the slider so that it can no longer move.
-



Note: Steps 20-22 are optional for reinstalling the door catch

20. On the door catch pin, one side has a wider mushroom head than the other. Using a 3/8 drill bit, drill this head until the mushroom is removed. Remove the bracket. Do Not Drill Through Plastic Door Catch



21. Use the supplied 1/4" bolt and locknut (7/16 wrench and socket) to bolt the supplied slotted mounting bracket to the door catch. Do not use the washers. Do not overtighten, tighten just enough that the catch will rotate between brackets.



22. Reinstall the door catch with the new bracket. Start by loosely bolting the door catch back with the new bracket and supplied washers as shown. While holding the catch in place, gently close the door until it is reinserted into the vehicle body. Once the catch is back in place, open the tailgate and slide the bracket all the way toward the vehicle and tighten the screws as shown.



23. Put the wheel and tire on and fully tighten the lug nuts.

Note: If you have/are planning to install EVO-1120 Tailgate Jack Mount, it can be installed using the 2 remaining M8 bolts removed in step 5.



After Install:

- Tighten all bolts securing purchased parts to specified locations.
- After completing installation using provided instructions, go through all steps again to make sure nothing was missed, not tightened or improperly assembled.
- Some components may need to be purchased separately.
- Check turn signals, headlights, fog lights (if applicable), taillights, blinkers and windshield wipers.
- Adjust mirrors, speedometer and headlights if needed.
- Make sure all gauges are fully operational.
- Drive the vehicle slowly for a couple minutes, looking and listening for abnormal noises while driving. After modification of a vehicle there will be differences in driving experiences and capabilities, be mindful of that.
- Inspect and Retorque all Bolts after 500 miles of completed installation and regularly thereafter.
- Some modification may be required.



Recommended Torque:

Size	Grade 2		Grade 5		Grade 8		18-8 S/S	
	Coarse	Fine	Coarse	Fine	Coarse	Fine	Coarse	Fine
#4*	-	-	-	-	-	-	5.2	-
#6*	-	-	-	-	-	-	9.6	-
#8*	-	-	-	-	-	-	19.8	-
#10*	-	-	-	-	-	-	22.8	31.7
1/4	4	4.7	6.3	7.3	9	10	6.3	7.8
5/16	8	9	13	14	18	20	11	11.8
3/8	15	17	23	26	33	37	20	22
7/16	24	27	37	41	52	58	31	33
1/2	37	41	57	64	80	90	43	45
9/16	53	59	82	91	115	129	57	63
5/8	73	83	112	128	159	180	93	104
3/4	125	138	200	223	282	315	128	124
7/8	129	144	322	355	454	501	194	193
1+	188	210	483	541	682	764	287	289