



EVO Manufacturing

4XE EVO COILOVER INSTALLATION ADDENDUM

* This instruction is intended to be used in combination with EVO-3028 instruction. This instruction includes added installation details for 4xE Specific Installations.

Spring change note: 4xE coil over kits will require an EVO HD spring set. This spring will be used to replace the standard rear lower coil over spring.

Before starting installation procedure please read <http://evomfg.com>Returns-Warranties-Shipping>

READ BEFORE INSTALL



Recommended Tools:

- Socket/Tool set
- Wrenches (English/metric)
- Cut off Wheel/Sawzall
- Thread lock
- Black Spray Paint



Safety Steps for installation

- For installing EVO MFG products always use wheel chokes to block rear tires from rolling.
- Always make sure you have everything necessary ready before install.
- If you have to, carefully lift front of vehicle by front frame rails extending suspension until tires leave the ground, place frame on approved jack stands for vehicle. Verify all lines/wires are not over extended.
- Remove tires if needed for easier install.
- Make sure to wear safety equipment (eye protection, hand protection, foot protection etc.) at all times during installation.
- Make sure all safety precautions have been taken.
- Always check and replace any part of vehicle that is worn or broken before starting install.
- Do not mix anything EVO with weaker alternatives.
- It is generally a good idea to apply liquid threadlock to all bolts.
- Tighten included hardware to torque specifications in bottom table unless it is otherwise specified, factory bolts should be torqued to factory Jeep specifications.



1. Remove Plate holding harness on passenger inner fender well.



2. Trim Factory Bracket as shown removing bracket section, yellow line in image.



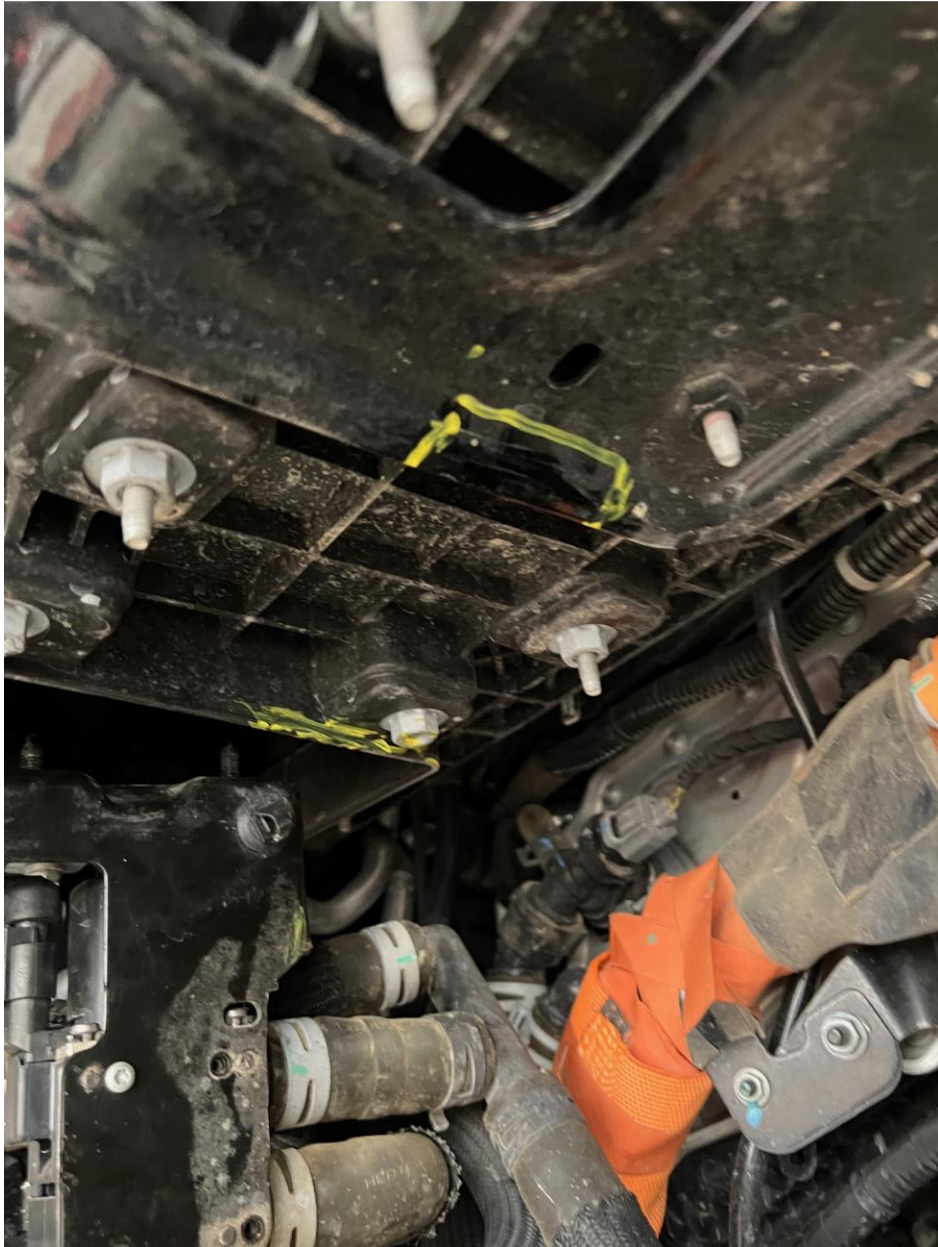
3. Install supplied tab as shown to cut bracket



4. Install Harness to cut factory bracket and re-install as shown to Jeep.



5. Simulate the install of EVO Coilover Shock Tower on passenger side and note/mark interference with upper wheel well structure. Mark, cut, grind material for appropriate clearance.





6. Clearance radius will likely need to be ground in passenger tower to clear hose. Clearance as needed, paint exposed metal.





After Install:

- After completing installation using provided instructions, go through all steps again to make sure nothing was missed, not tightened or improperly assembled.
- Some components may need to be purchased separately.
- Make sure all gauges are fully operational.
- Drive the vehicle slowly for a couple minutes, looking and listening for abnormal noises while driving. After modification of a vehicle there will be differences in driving experiences and capabilities, be mindful of that.
- Inspect and Retorque all Bolts after 500 miles of completed installation and regularly thereafter.

General Recommended Torque Specs:

Size	Grade 2		Grade 5		Grade 8		18-8 S/S	
	Coarse	Fine	Coarse	Fine	Coarse	Fine	Coarse	Fine
#4*	-	-	-	-	-	-	5.2	-
#6*	-	-	-	-	-	-	9.6	-
#8*	-	-	-	-	-	-	19.8	-
#10*	-	-	-	-	-	-	22.8	31.7
1/4	4	4.7	6.3	7.3	9	10	6.3	7.8
5/16	8	9	13	14	18	20	11	11.8
3/8	15	17	23	26	33	37	20	22
7/16	24	27	37	41	52	58	31	33
1/2	37	41	57	64	80	90	43	45
9/16	53	59	82	91	115	129	57	63
5/8	73	83	112	128	159	180	93	104
3/4	125	138	200	223	282	315	128	124
7/8	129	144	322	355	454	501	194	193